

Definitions:

OPEN DEFECACTION:

Proportion of households without access to a latrine, who dispose of human feces in fields, forest, bushes, open bodies of water, beaches or other open space.

IMPROVED WATER SOURCE:

Proportion of households who obtain drinking water from piped water, boreholes, protected wells, or rainwater provided that collection time is not more than 30 minutes.

DRINKING WATER TREATMENT:

Proportion of households who do anything to drinking water to make it safer to drink.

HANDWASHING CLEANSER:

Categorization of the type of cleansing agent observed at the household's handwashing station.

HANDWASHING PRACTICES:

Proportion of female caregivers who reported washing her hands in the following circumstance:

- » Dirty: when dirt was visible or after working in the field
- » Handling food: before preparing food, before serving a meal, before eating, or before feeding a child
- » Around defecation: after toilet use or after cleaning child following defecation
- » Handling livestock: after handling chicken, cow, duck, or other animals

WEALTH:

A wealth index was constructed using the DHS method, including data on a household's ownership of selected assets; materials used for housing construction; and types of water access and sanitation facilities. Wealth quintiles are reported here.

FEMALE CAREGIVER'S EDUCATION:

Categories are defined using the highest grade of schooling completed by the female caregiver: Primary 1 incomplete includes completing grades 1, 2, 3, or 4; primary 1 complete includes completing grades 5, 6, or 7; and any secondary or higher includes completing grades 8, 9, 10, 11, 12, or any higher education.

This infographic was produced as a part of a study that was conducted by the Friedman School of Nutrition Science and Policy at Tufts University, in collaboration with Universidade Lúrio, Mozambican National Institute for Health, and the Association for Food and Nutrition Security (ANSA), under the Feed the Future Innovation Lab for Nutrition.

The study was conducted in 10 districts of Nampula province where USAID supports programs in nutrition and agriculture.

Support for this publication was provided by the Feed the Future Innovation Lab for Nutrition, which is funded by the United States Agency for International Development, CSI and USAID Mission under grant ID: AID-OAA-L-10-00006.

nutritioninnovationlab.org



WATER, SANITATION AND HYGIENE

||||| ||||| ||||| ||||| ||||| ||||| |||||

Source of DRINKING WATER



collected drinking water from an improved source

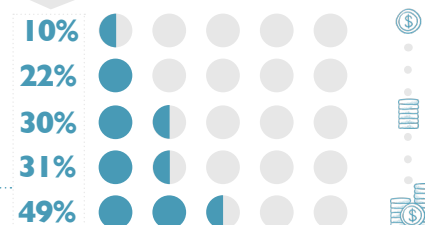


Treatment of DRINKING WATER



treated their drinking water

WEALTH



Female Caregiver's EDUCATION



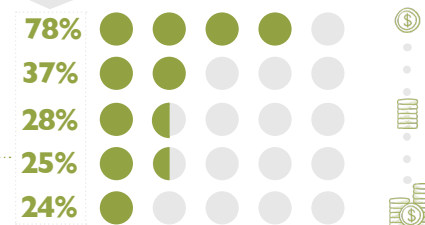
collected drinking water from an improved source

Open DEFECCATION



practiced open defecation

WEALTH

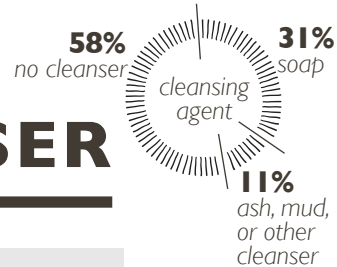


Female Caregiver's EDUCATION

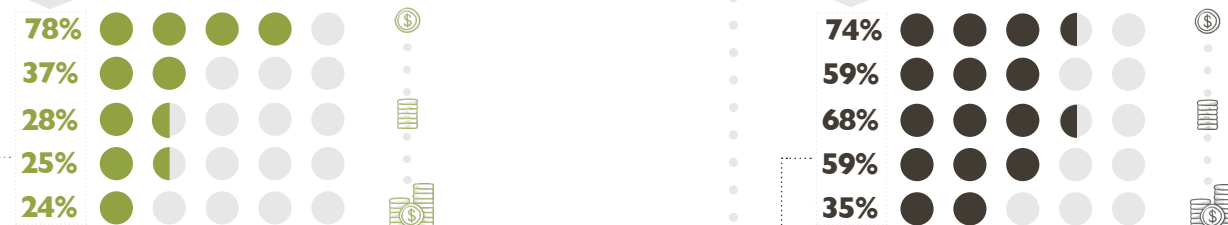


practiced open defecation

Handwashing CLEANSER



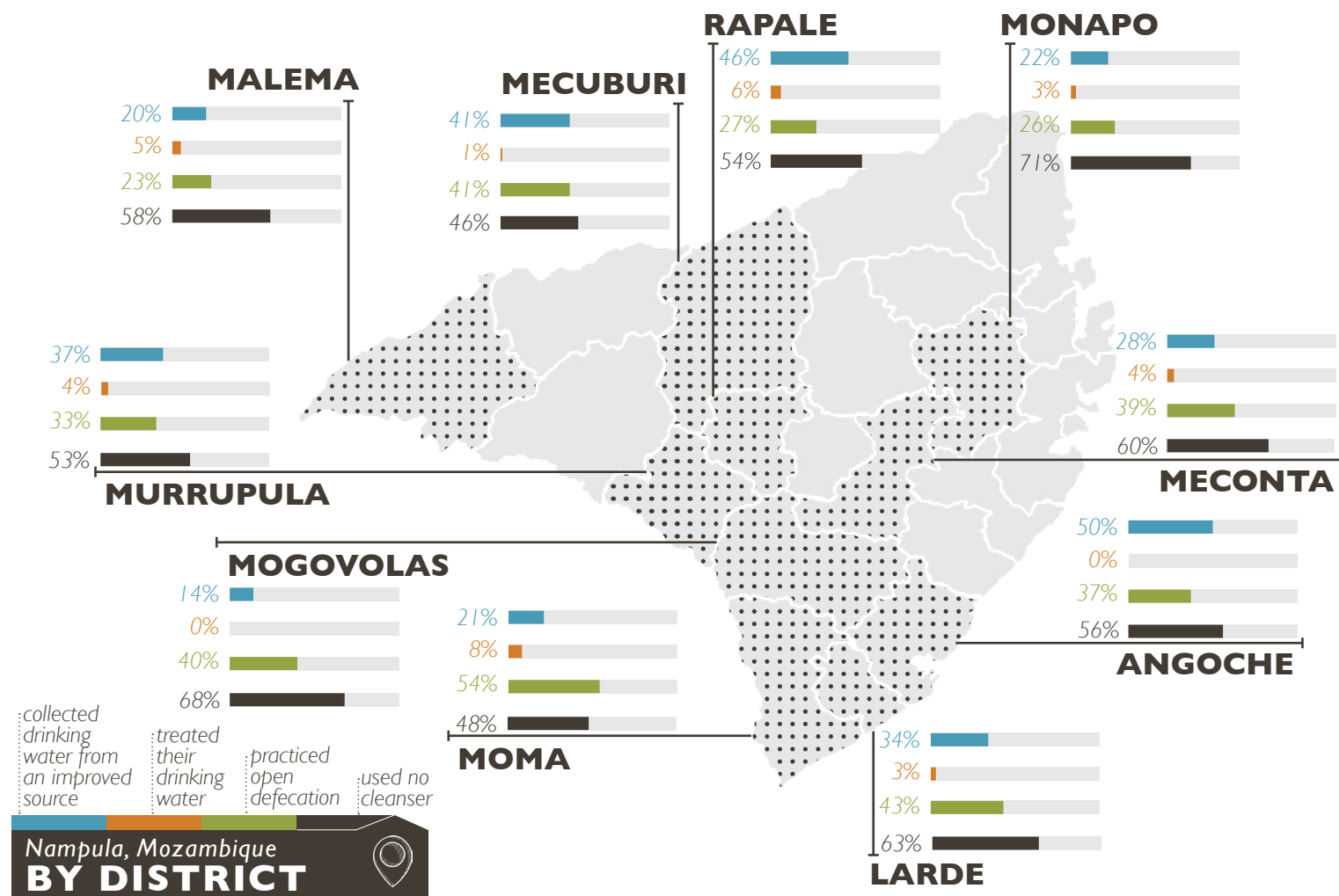
WEALTH



Female Caregiver's EDUCATION



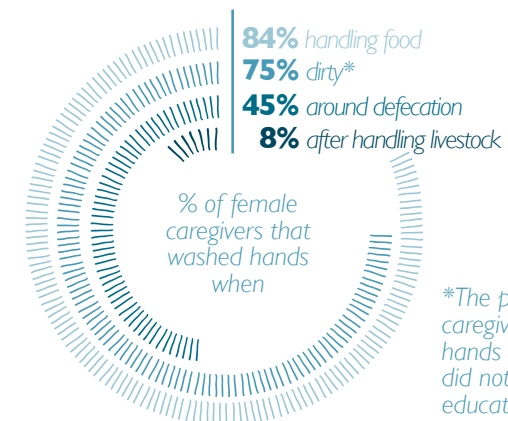
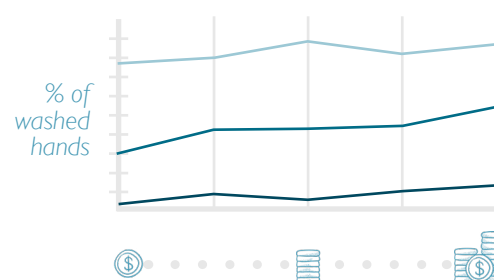
no cleanser



Handwashing PRACTICES



WEALTH



*The proportion of female caregivers who wash her hands when they were dirty did not vary by wealth or education level.

Female Caregiver's EDUCATION

